

E-ONCOGITE: Evaluation of a cognitive therapy adapted to the "Chemobrain" in patients treated for breast cancer

P.A. Rodriguez¹, V.Great-Muller², C. Chakiba-Brugere², C. Lalet², C. Bellera², V. Postal-Le Dorse¹

¹ Laboratoire de Psychologie EA4139, Université de Bordeaux

² Institut Bergonié, Bordeaux

Return to work

Increased risk of unemployment, early retirement and lower probability of reemployment (Mehnert., 2011)

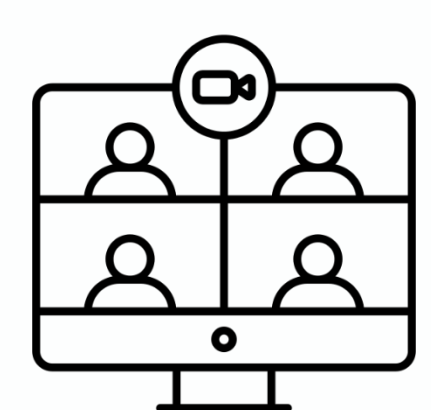
Perceptions:

- Fatigue, distress, job stress (Clavio et al., 2010)
- Work limitations (Hansen et al., 2008)
- **Cognitive impairment**, decreased efficiency, diminished quality of life and daily functioning (Boykoff et al., 2009)

Cancer-related cognitive impairment

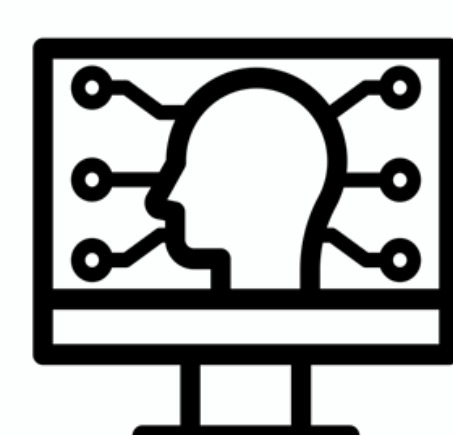
- Executive functioning (Hermelink et al., 2008)
- Speed processing (Wefel et al., 2004)
- Verbal Memory (Quesnel., 2009)
- Perceived cognitive functioning (Boscher et al., 2020)

Intervention



Cognitive remediation workshops

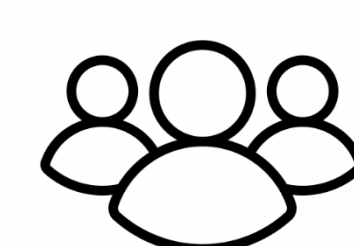
- Online
- Repetition of cognitive tasks
- Education about CRCI
- Adaptive strategies.



A web application with cognitive training exercises

- Complementary training of the tasks seen during the workshops

Design



A randomized prospective study.
164 Breast Cancer Survivors

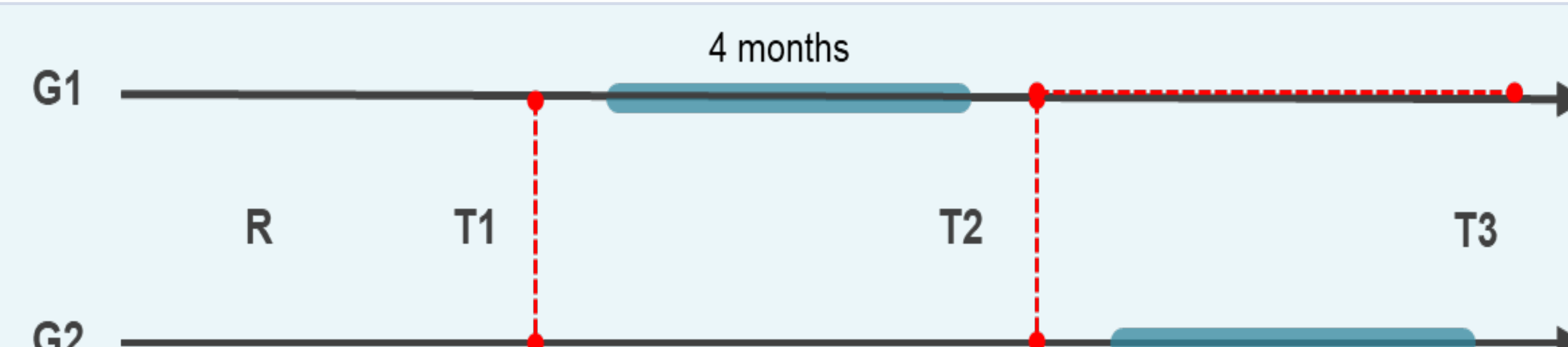


Primary outcomes

- Self-perceived functional well-being
- Self-perceived emotional well-being

Secondary outcomes

- Executive functioning (working memory, inhibition, flexibility and shifting)
- Perceived cognitive functioning.
- Perceived quality of life



- ✓ Enhancement of return to work
- ✓ Improvement in quality of life
- ✓ Improvement in cognitive functioning
- ✓ Improvement in perceived cognitive functioning

The Authors declare that there is no conflict of interest